

---

## APPENDIX:

---

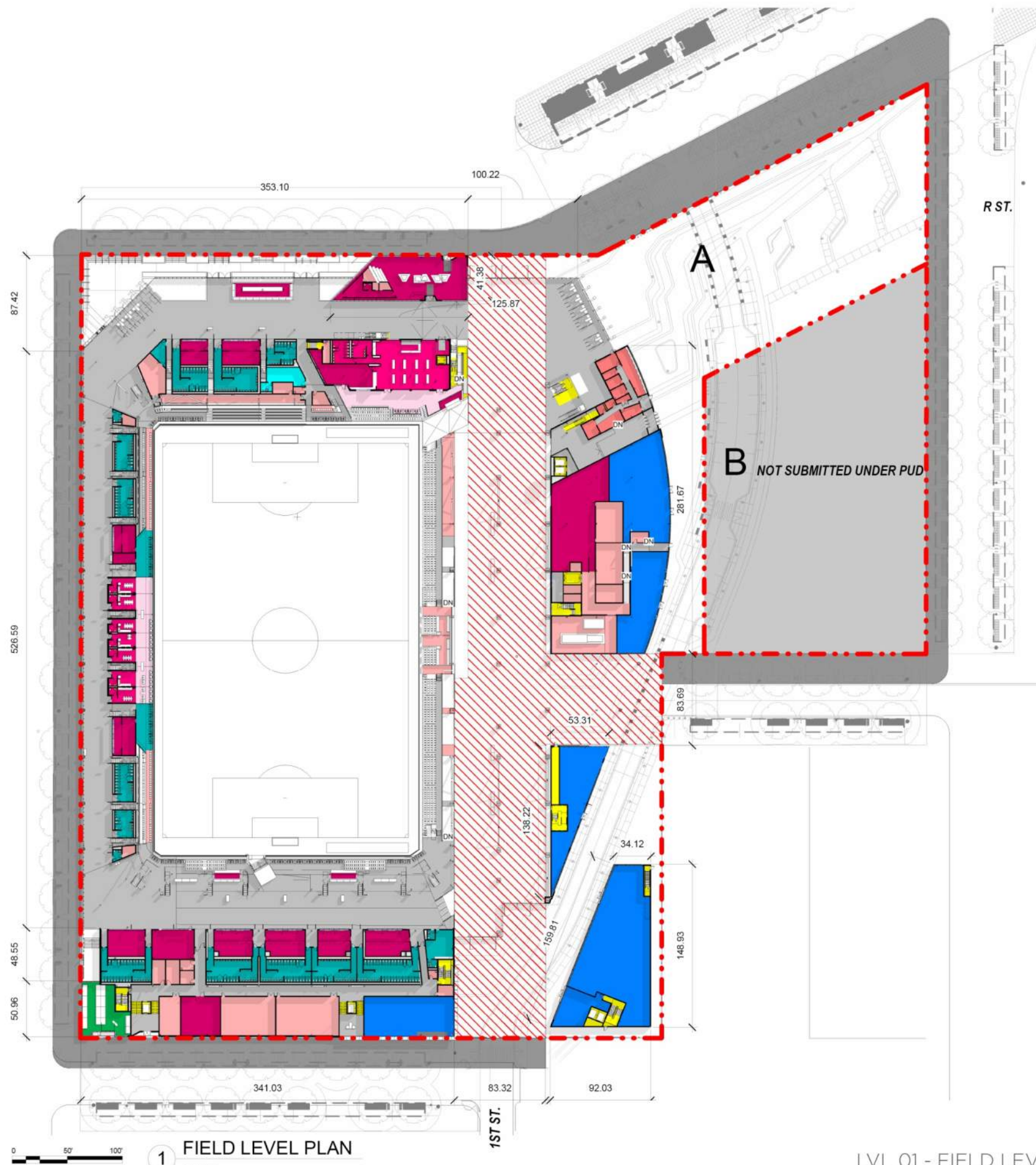
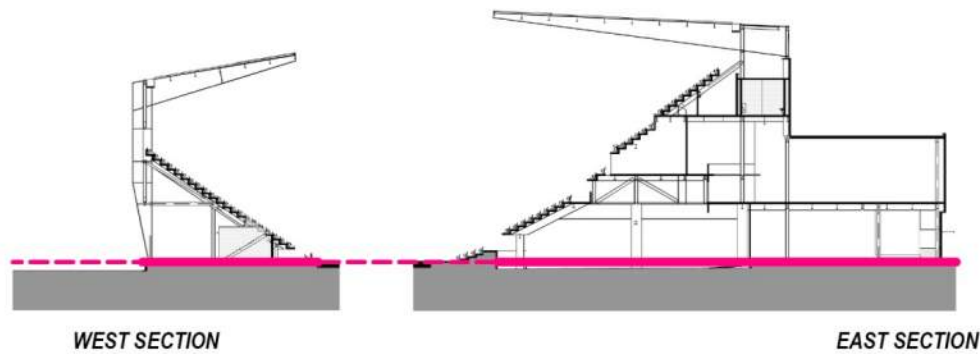
- DIMENSIONED CONCOURSE LEVEL PLAN & DIMENSIONED SECTIONS
- CONCOURSE LIGHTING DESIGN SCHEMATIC SHEETS
- SIGNAGE AND GRAPHICS DETAIL SHEETS

- 1 - SPECTATOR FACILITIES
- 1 - SPECTATOR FACILITIES - PREMIUM
- 1 - SPECTATOR FACILITIES - PREMIUM PATIO
- 2 - FOOD SERVICE & RETAIL
- 2 - FOOD SERVICE & RETAIL - NON STADIUM
- 3 - TEAM FACILITIES
- 3 - TEAM FACILITIES HOME
- 4 - MEDIA FACILITIES
- 5 - ADMINISTRATION FACILITIES
- 6 - SERVICE & OPERATIONS
- 7 - CIRCULATION
- 7 - VERTICAL CIRCULATION
- 8 - BIKE VALET

**PART B - NOT PART OF STADIUM**  
**PUD SUBMISSION, DESIGN INTENT**  
**SHOWN FOR REFERENCE ONLY**

**PUBLIC REALM - NOT PART OF PUD**  
**SUBMISSION, DESIGN INTENT SHOWN**  
**FOR REFERENCE ONLY**

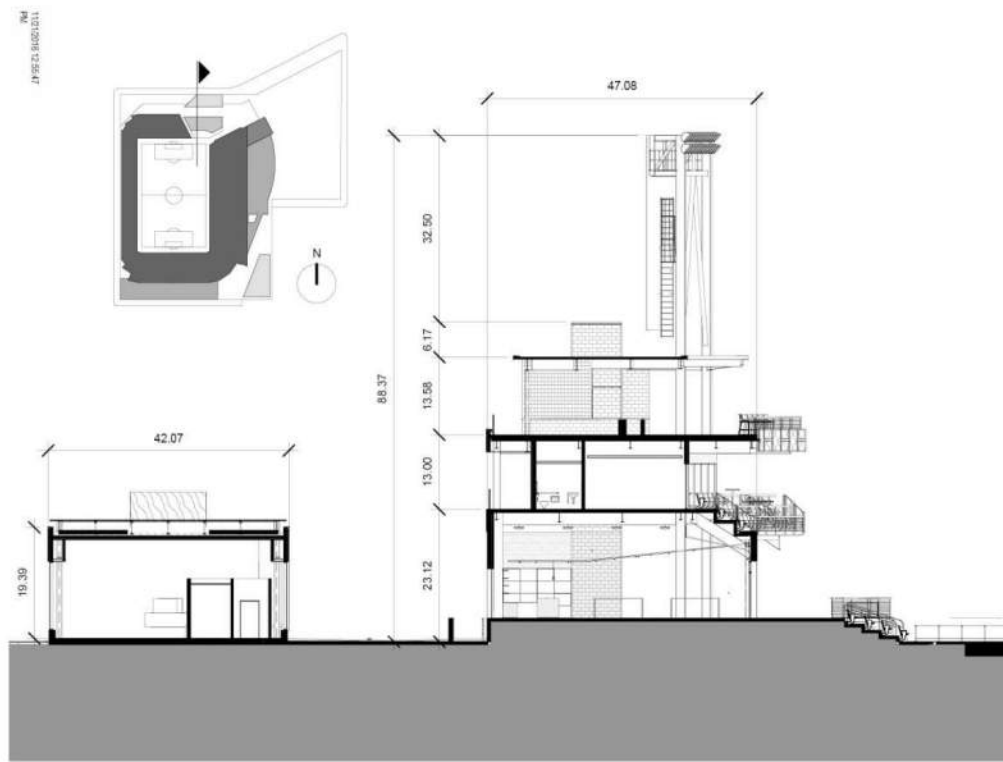
**DISTRICT OF COLUMBIA RESPONSIBLE**  
**FOR DESIGN OF PUBLIC REALM**



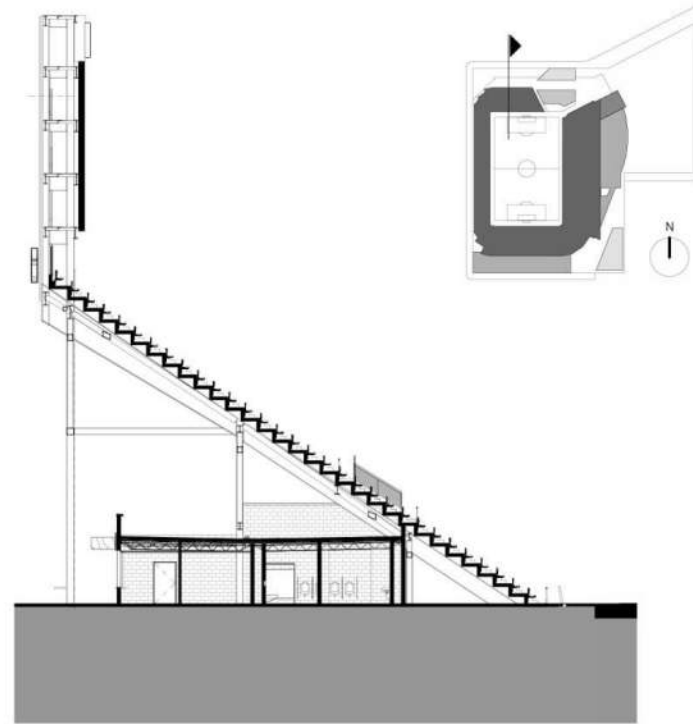
**POPULOUS**  
 Marshall | Moya Design



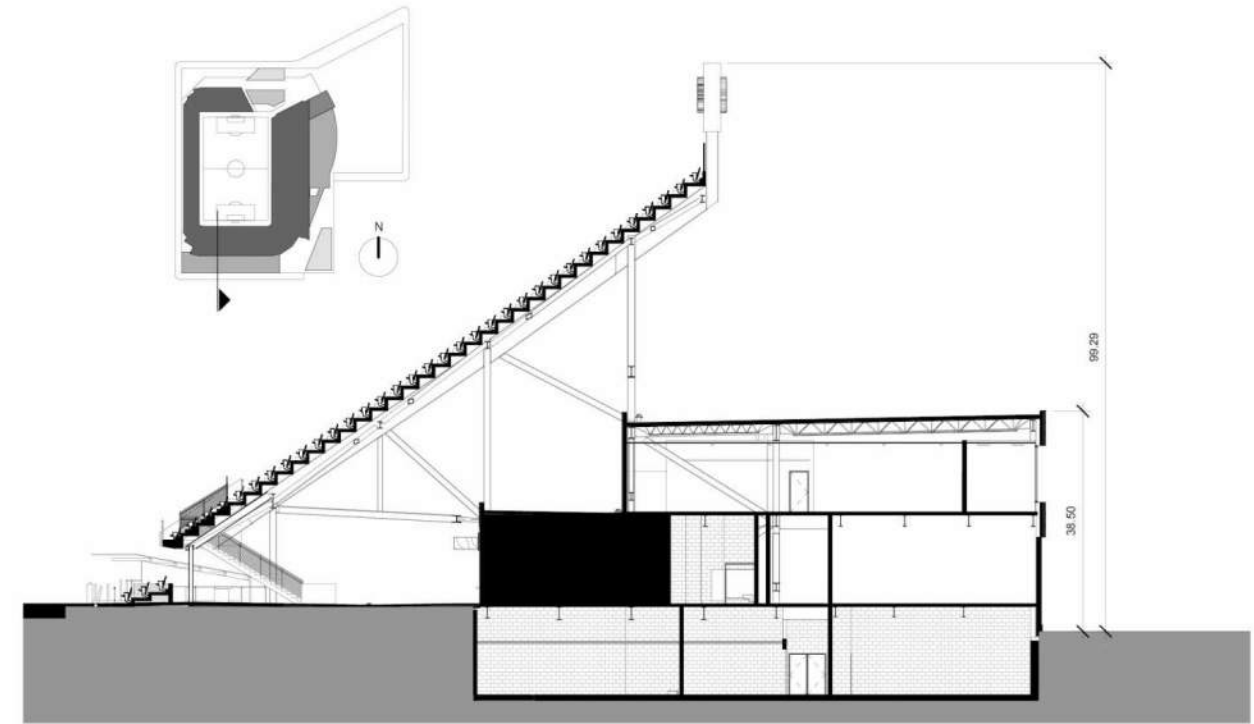
DC UNITED SOCCER STADIUM  
 100 Potomac Avenue, SW  
 Washington, DC 20024



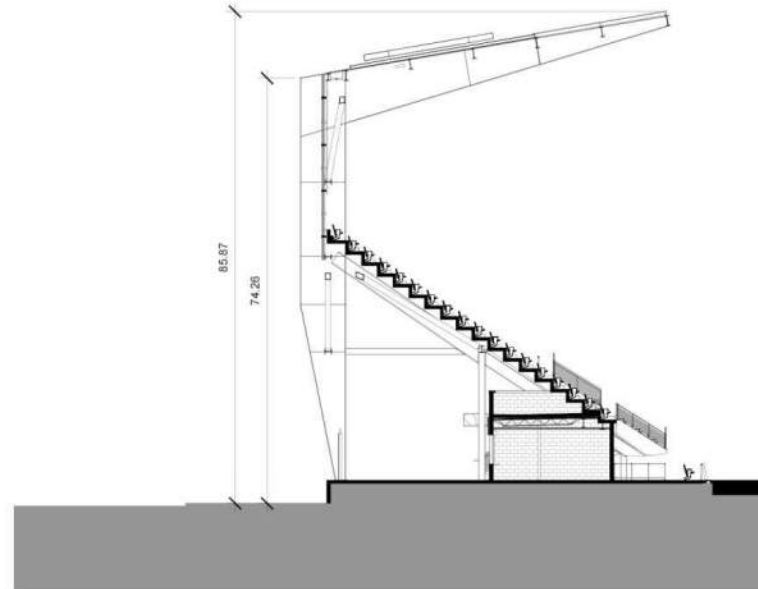
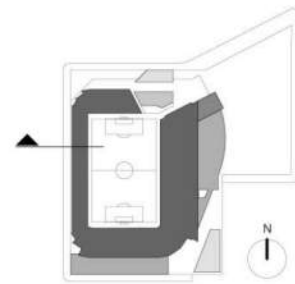
5 NORTH ENLARGED SECTION @ CLUB  
1/16" = 1'-0"



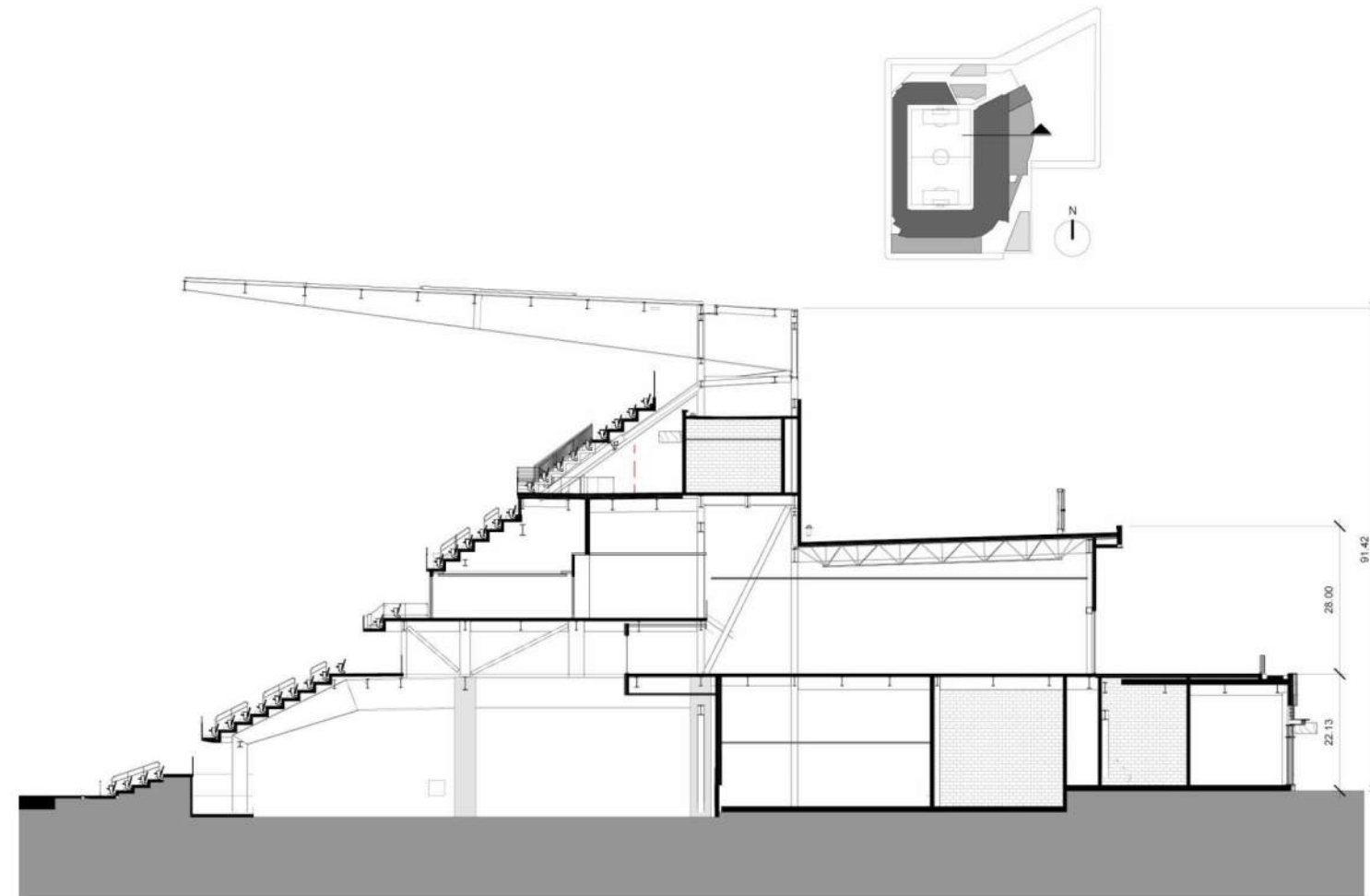
4 NORTH ENLARGED SECTION  
1/16" = 1'-0"



3 SOUTH ENLARGED SECTION  
1/16" = 1'-0"



2 EAST ENLARGED SECTION  
1/16" = 1'-0"



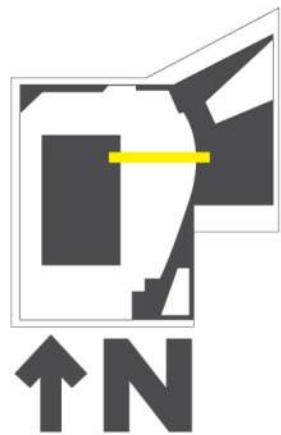
1 EAST ENLARGED SECTION  
1/16" = 1'-0"

**POPULOUS**  
Marshall | Moya Design

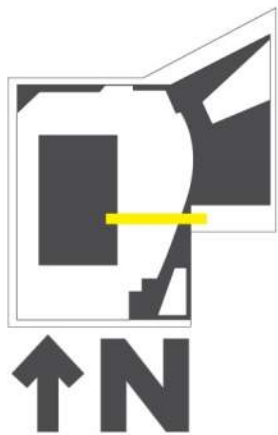


DC UNITED SOCCER STADIUM  
100 Potomac Avenue, SW  
Washington, DC 20024

// EAST SECTION THROUGH MAIN CLUB & EXTERIOR BALCONY



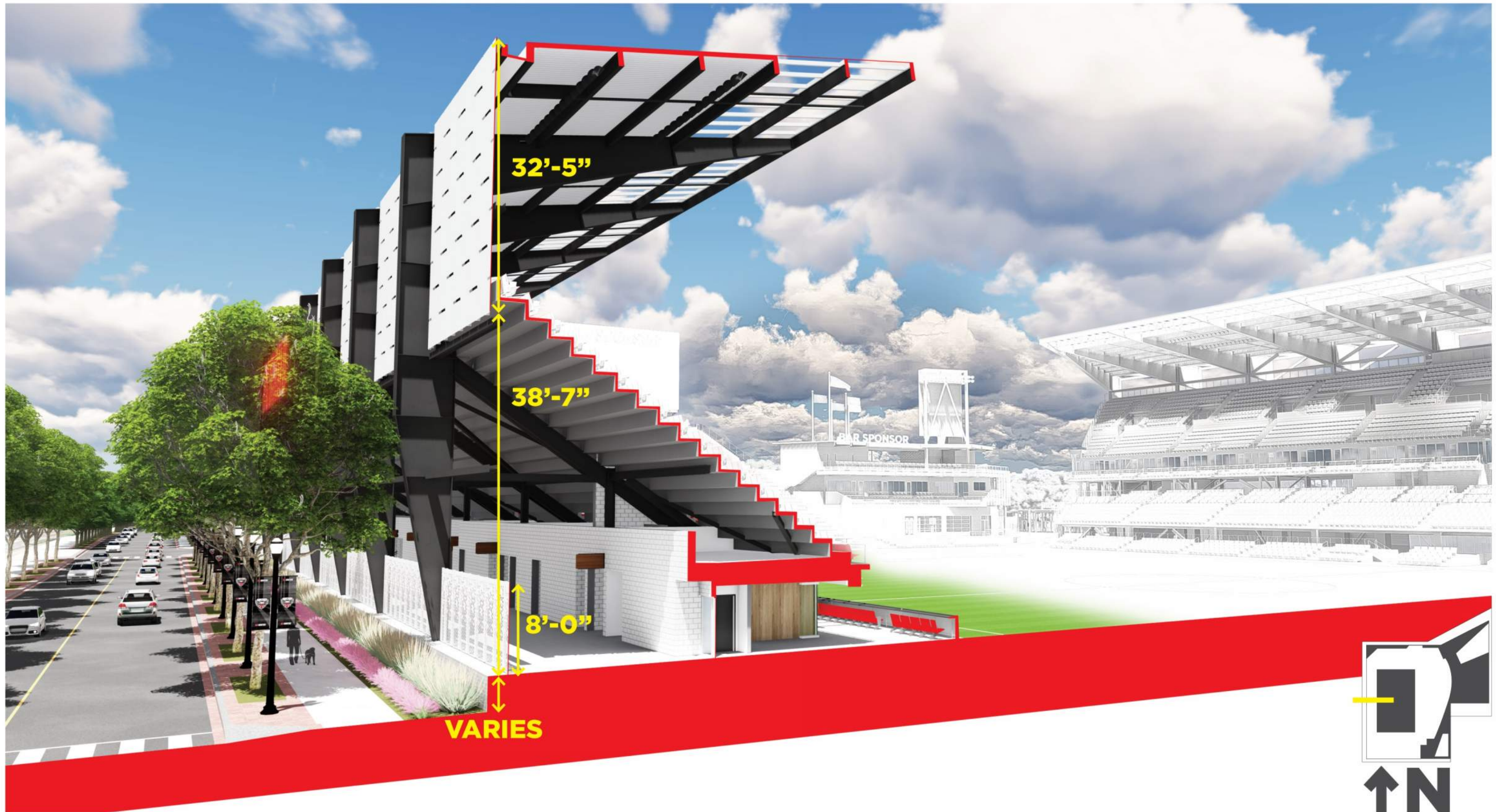
// EAST SECTION @ S STREET THROUGH S STREET GATE & DIRECTORS LOUNGE



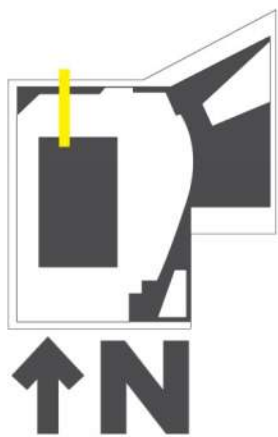
// SOUTH SECTION @ STAFF ENTRY



// WEST SECTION THROUGH FIELD SUITES

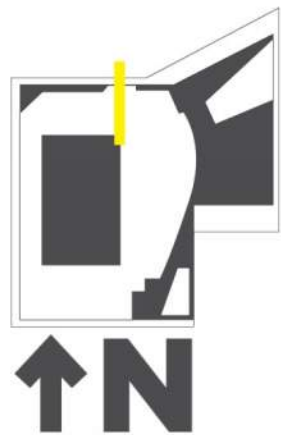


// NORTH SECTION THROUGH LED VIDEO BOARD & NORTH CONCOURSE





// NORTH SECTION THROUGH TEAM STORE & MVP BUILDING



# // STADIUM ARCHITECTURAL LIGHTING



LED POLE LIGHTING

LINEAR LED ACCENT LIGHTING

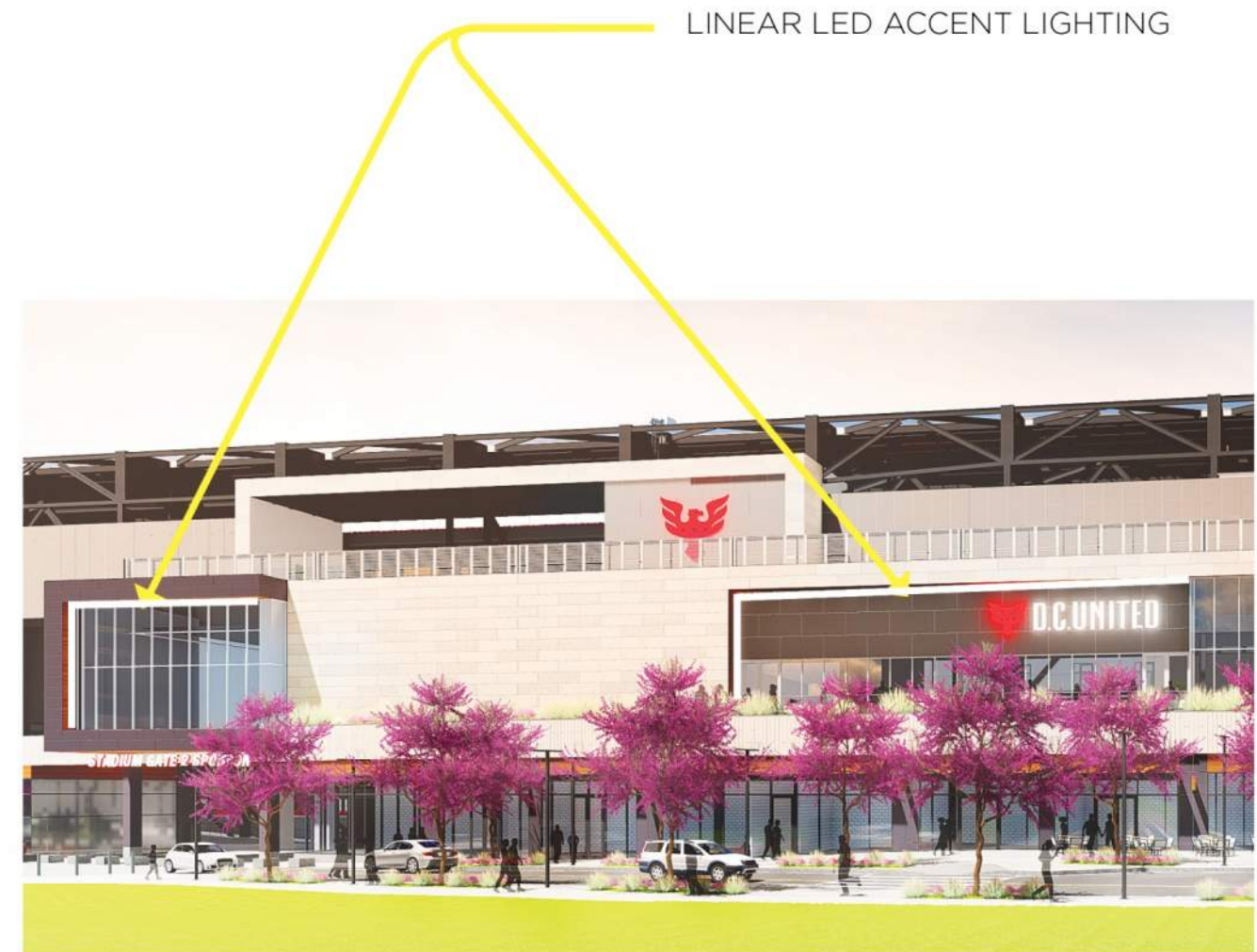
LINEAR LED ACCENT LIGHTING



// STADIUM ARCHITECTURAL LIGHTING

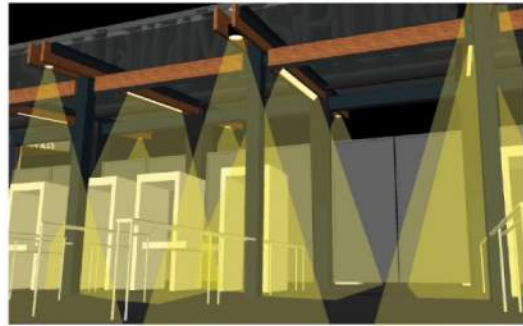


LINEAR LED ACCENT LIGHTING

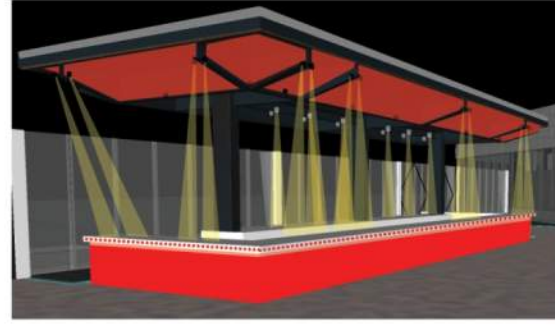


LINEAR LED ACCENT LIGHTING





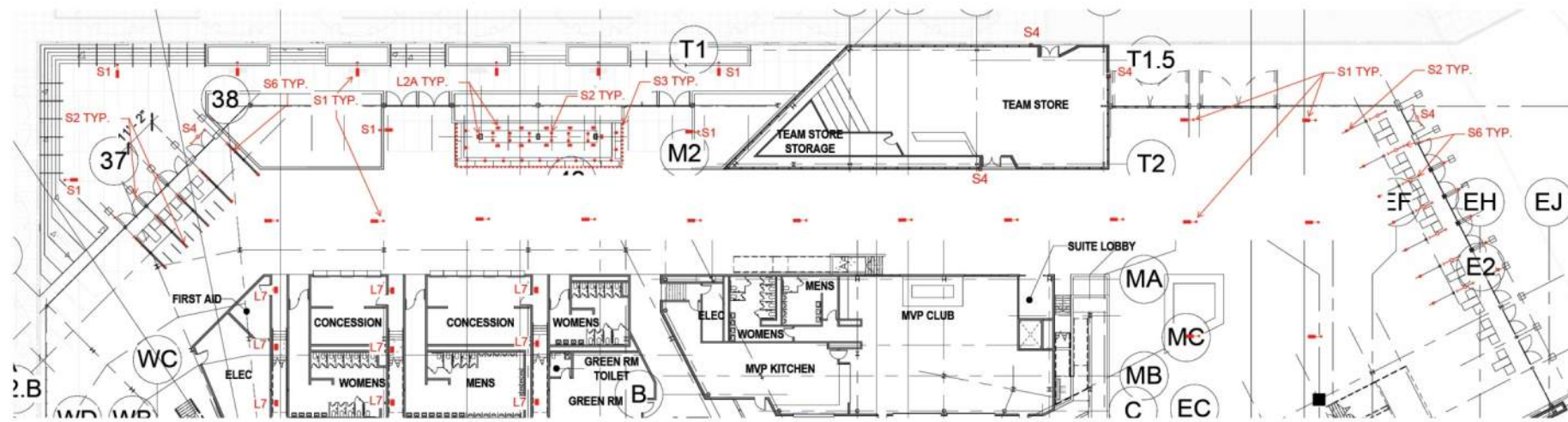
5 MAIN CONCOURSE NORTH - SECURITY BOOTH  
NTS



4 MAIN CONCOURSE NORTH - BAR  
NTS



3 MAIN CONCOURSE NORTH - TEAM STORE FACADE LTNG.  
NTS



2 MAIN CONCOURSE NORTH - PEDESTRIAN STREETSCAPE  
1/8" = 1'-0"



1 MAIN CONCOURSE NORTH - SECTION  
1/8" = 1'-0"

**POPULOUS®**

**POPULOUS**  
Architecture, Planning  
20014, Washington, DC  
Korey Co. Member: 0412

**ARCHITECTURAL ARCHITECT**  
Marshall Silverman  
2257 Woodside Avenue, Suite 300  
Washington, DC 20007

**INDUSTRIAL ENGINEERS**  
A/E Engineers  
1115 16th Street, Suite 200  
Washington, DC 20036

**MECHANICAL ENGINEERS**  
M.E. Engineers  
1422 Conover Road, Suite 300  
Lynch, VA 24090

**ELECTRICAL ENGINEERS**  
M.E. Engineers  
1422 Conover Road, Suite 300  
Lynch, VA 24090

**CIVIL ENGINEERS**  
M.E. Engineers  
1422 Conover Road, Suite 300  
Lynch, VA 24090

**SOIL REMEDIATION CONSULTANTS**  
1700 North Street, Suite 200  
Washington, DC 20001

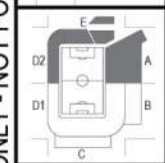
**SOIL CONSULTANTS**  
M.E. Engineers  
1011 Limestone Circle, Suite 200  
Manassas, VA 20108

**ACCIDENTALY CONSULTANTS**  
24 Boulder Commons, LLC  
2000 Wilson Boulevard  
Lynchburg, VA 24002

DC UNITED SOCCER STADIUM  
100 Potomac Avenue, SW  
Washington, DC 20024

SCHEMATIC DESIGN  
SEPTEMBER 2, 2016

REVISIONS		
NO.	DATE	DESCRIPTION



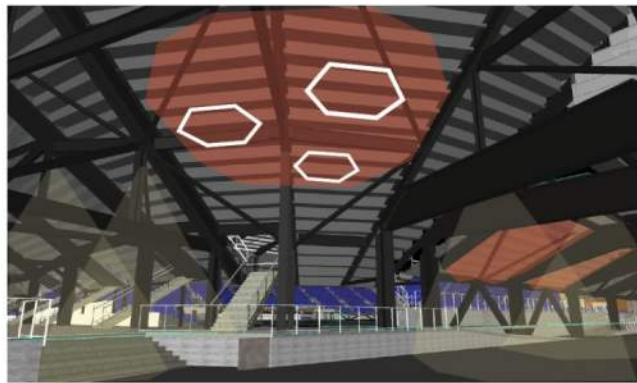
PROJECT NO: DV14029 DESIGN: ME ENGINEERS®  
DATE: TYP CONCOURSE  
LTG - MAIN CONCOURSE - NORTH

EL3-101

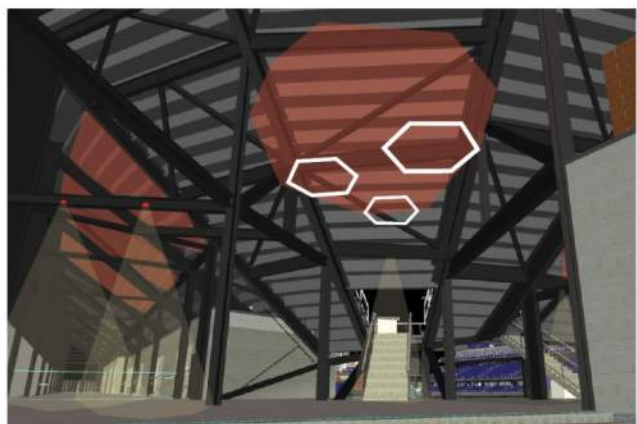
1. LIGHTING SHOWN ON THIS PAGE ARE INDICATIVE OF THE FINAL LIGHTING SCHEME. THE IMAGES AND PLANS A PRESENTED TO INFORM THE LEVEL OF LIGHTING INCLUDED AT THE TIME OF SCHEMATIC DESIGN.
2. THE IMAGES ON THIS DOCUMENT IS PRE PUD SUBMISION AND DO NOT REFLECT THE CURRENT DESIGN.

FOR REFERENCE ONLY - NOT FOR CONSTRUCTION

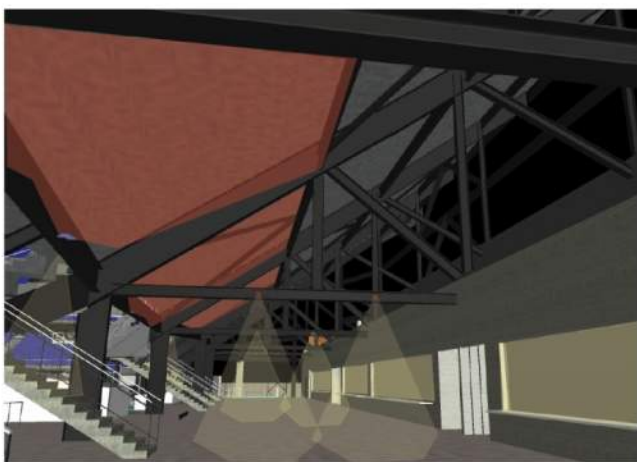




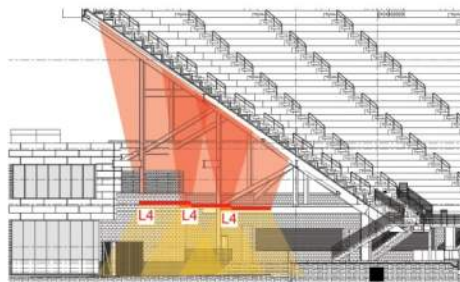
8 MAIN CONCOURSE VIEW OF S-E CORNER  
NTS



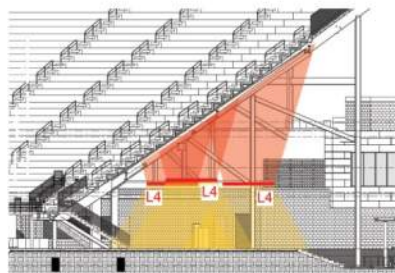
9 MAIN CONCOURSE VIEW OF S-W CORNER  
NTS



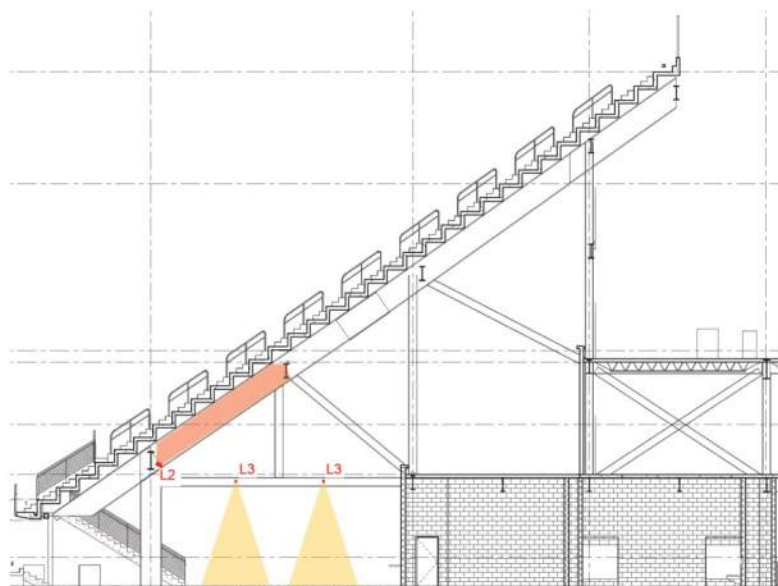
3 MAIN CONCOURSE SOUTH - VIEW EAST  
NTS



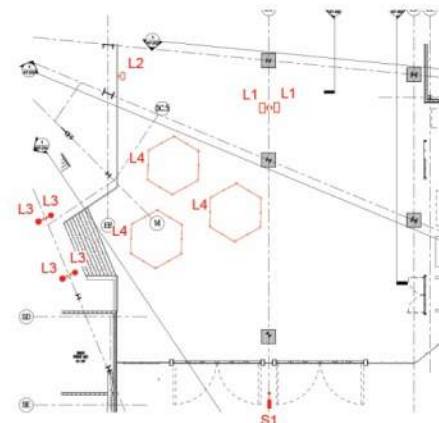
6 SOUTH-EAST CORNER LTG. SECTION  
1/16" = 1'-0"



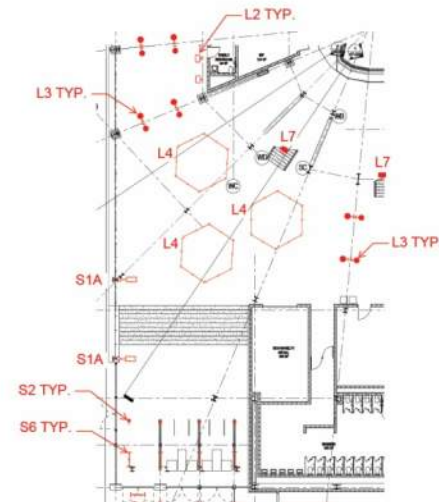
7 SOUTH-WEST CORNER LTG. SECTION  
1/16" = 1'-0"



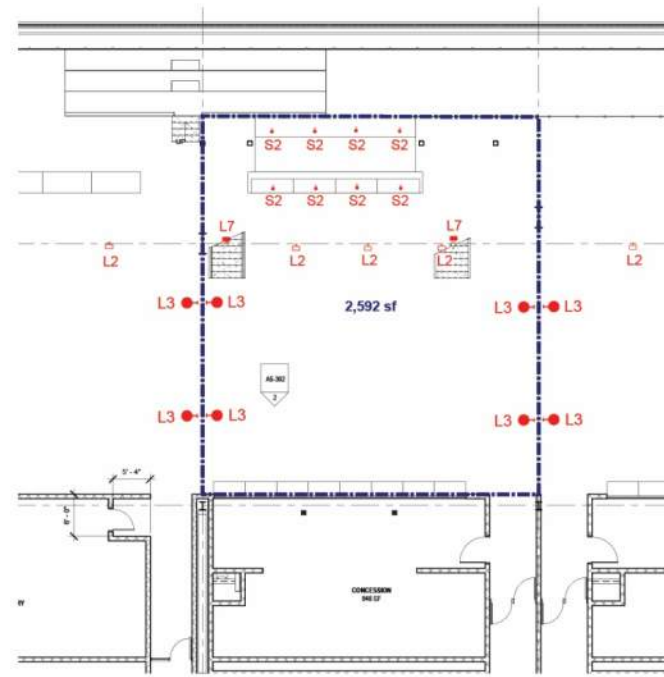
2 MAIN CONC. SOUTH - LTG. SECTION  
1/8" = 1'-0"



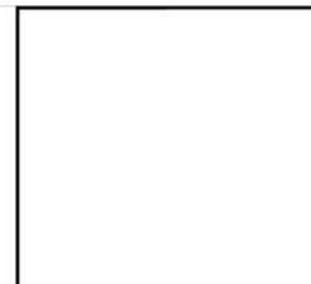
4 MAIN CONCOURSE S-E CORNER  
1/16" = 1'-0"



5 MAIN CONCOURSE S-W CORNER  
1/16" = 1'-0"



1 MAIN CONCOURSE SOUTH - TYPICAL BAY  
1/8" = 1'-0"



**POPULOUS®**

**POPULOUS®**  
Architecture, Planning  
& Interiors  
3000 Wisconsin Avenue, Suite 300  
Washington, DC 20007

**ASSOCIATE ARCHITECT**  
Natalie Miller-Cramer  
2301 Wisconsin Avenue, Suite 300  
Washington, DC 20007

**STRUCTURAL ENGINEER**  
S.F. Eisenberg  
1112 15th Street, Suite 205  
Washington, DC 20004

**MEP ENGINEERS**  
M.C. Coleman  
1400 Dever Road Parkway, Suite 300  
Dulles, VA 20146

**SCHEMATIC DESIGN & ENGINEERING**  
M.E. Coleman  
1400 Dever Road Parkway, Suite 300  
Dulles, VA 20146

**CIVIL ENGINEERS**  
W.C. Parsons Brinckerhoff  
1100 15th Street, Suite 400  
Washington, DC 20004

**PAVEMENT CONSULTANTS**  
T.R. Grogan, Inc.  
2146 Wisconsin Ave., NW, Suite 200  
Washington, DC 20007

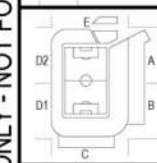
**CODE CONSULTANTS**  
Kane Engineers  
1311 Columbia Road, Suite 203  
Falls Church, VA 22044

**ACCESSIBILITY CONSULTANTS**  
Edi-Builder Consulting, LLC  
2000 Massachusetts Avenue, Suite 100  
Washington, DC 20002

**DC UNITED SOCCER STADIUM**  
100 Potomac Avenue, SW  
Washington, DC 20024

SCHEMATIC DESIGN  
SEPTEMBER 2, 2016

NO.	DATE	DESCRIPTION



PROJECT NO. DV14020  
PROJECT NAME  
DATE PLOTTED  
TYP CONCOURSE  
LTG - MAIN CONCOURSE - SOUTH

POPULOUS PROJECT NUMBER: 14020-0001-0001  
**EL3-102**

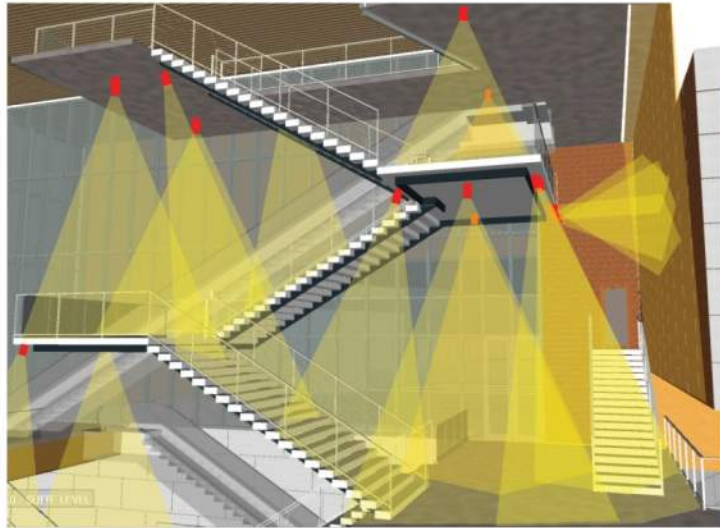
FOR REFERENCE ONLY - NOT FOR CONSTRUCTION

1. LIGHTING SHOWN ON THIS PAGE ARE INDICATIVE OF THE FINAL LIGHTING SCHEME. THE IMAGES AND PLANS A PRESENTED TO INFORM THE LEVEL OF LIGHTING INCLUDED AT THE TIME OF SCHEMATIC DESIGN.
2. THE IMAGES ON THIS DOCUMENT IS PRE PUD SUBMISISON AND DO NOT REFLECT THE CURRENT DESIGN.

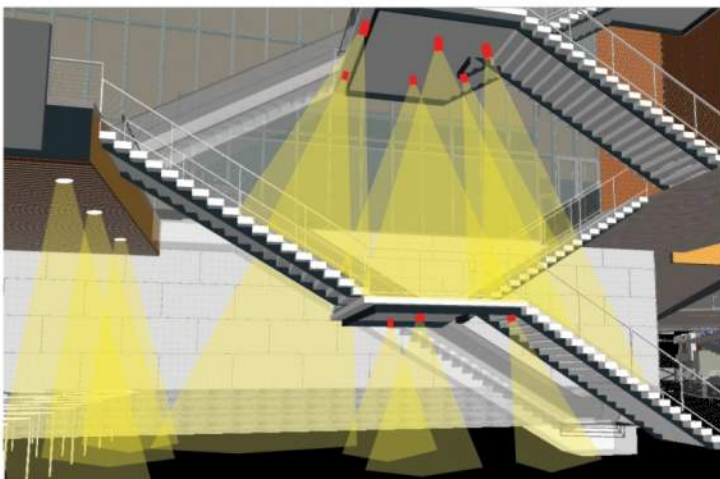




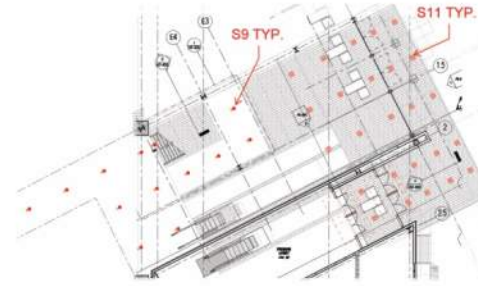
4 NORTH EAST CIRCULATION BLOCK FACADE



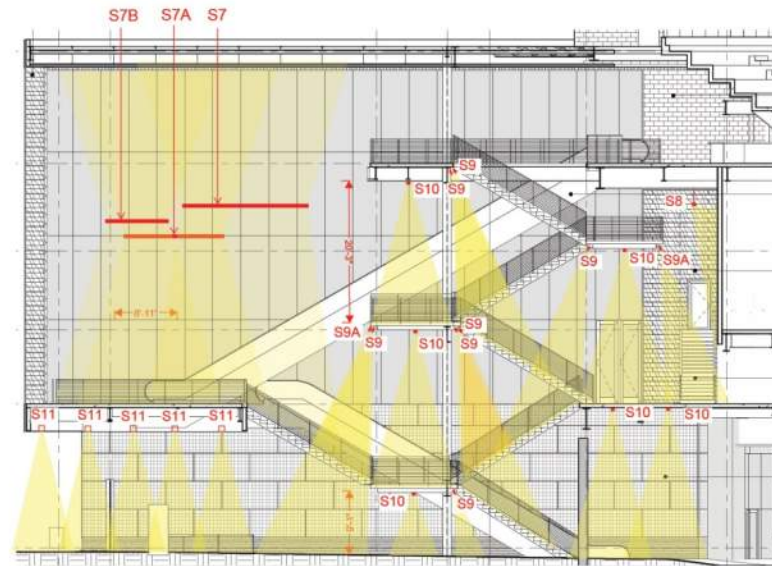
5 NORTH EAST CIRCULATION BLOCK STAIRS - VIEW FROM CLUB LEVEL



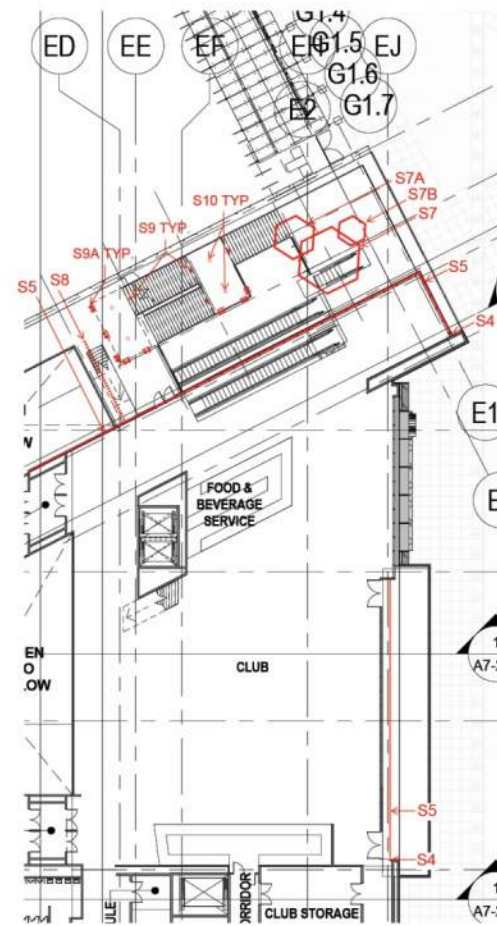
6 NORTH EAST CIRCULATION BLOCK STAIRS - VIEW FROM MAIN CONCOURSE



2 NORTH EAST CIRCULATION BLOCK - MAIN CONC. LEVEL LTNG.  
1/8" = 1'-0"



3 NORTH EAST CIRCULATION BLOCK - SECTION  
1/8" = 1'-0"



1 NORTH EAST CIRCULATION BLOCK - CLUB LEVEL LTNG.  
1/8" = 1'-0"

**POPULOUS®**

**POPULOUS®**  
Architecture, Planning  
Interior, Lighting, and  
Landscape Architecture  
Kansas City, Missouri 64112

**ASSOCIATE ARCHITECT**  
Daniel M. Coover  
2201 Wisconsin Avenue, NW, Suite 305  
Washington, DC 20007

**STRUCTURAL ENGINEER**  
A.J. Engstrom  
1112 16th Street, NW, Suite 200  
Washington, DC 20036

**MEP ENGINEER**  
M.E. Engstrom  
1112 16th Street, NW, Suite 300  
Silver Spring, MD 20910

**TELECOMMUNICATIONS ENGINEER**  
M.E. Engstrom  
1112 16th Street, NW, Suite 300  
Silver Spring, MD 20910

**CIVIL ENGINEER**  
R.E. Pappas  
1112 16th Street, NW, Suite 300  
Washington, DC 20036

**CODE CONSULTANTS**  
1212 16th Street, NW, Suite 400  
Washington, DC 20036

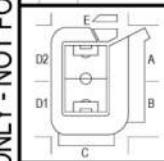
**CODE CONSULTANTS**  
1112 16th Street, NW, Suite 300  
Silver Spring, MD 20910

**ACCESSIBILITY CONSULTANTS**  
Echelon Consulting, LLC  
2000 Massachusetts  
Lanham, MD 20641

**DC UNITED SOCCER STADIUM**  
100 Potomac Avenue, SW  
Washington, DC 20024

SCHEMATIC DESIGN  
SEPTEMBER 2, 2016

NO.	DATE	DESCRIPTION



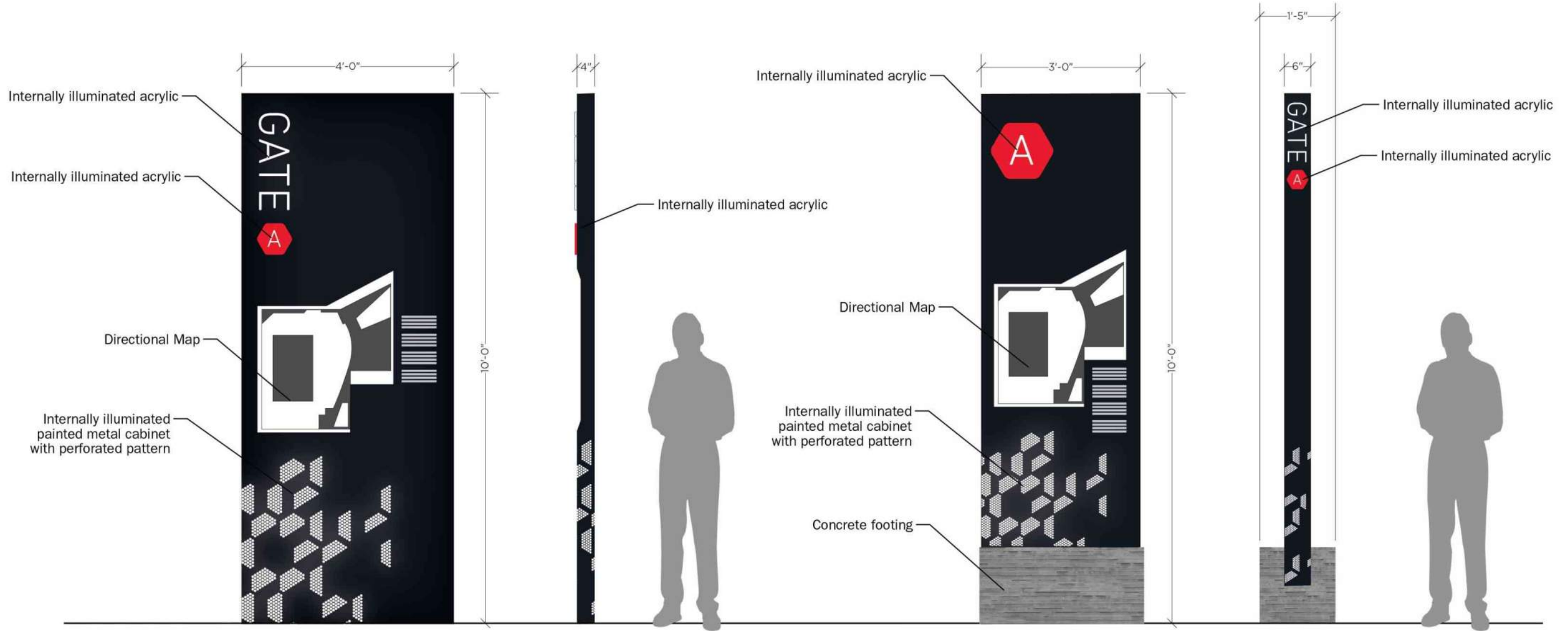
PROJECT: DV14029 | ME ENGINEERS  
REVISIONS:  
DATE: 09/02/16  
DRAWN BY: [REDACTED]  
CHECKED BY: [REDACTED]

FACADE LIGHTING  
- NORTH EAST  
ENTRY  
EL6-001

FOR REFERENCE ONLY - NOT FOR CONSTRUCTION

1. LIGHTING SHOWN ON THIS PAGE ARE INDICATIVE OF THE FINAL LIGHTING SCHEME. THE IMAGES AND PLANS A PRESENTED TO INFORM THE LEVEL OF LIGHTING INCLUDED AT THE TIME OF SCHEMATIC DESIGN.
2. THE IMAGES ON THIS DOCUMENT IS PRE PUD SUBMISION AND DO NOT REFLECT THE CURRENT DESIGN.





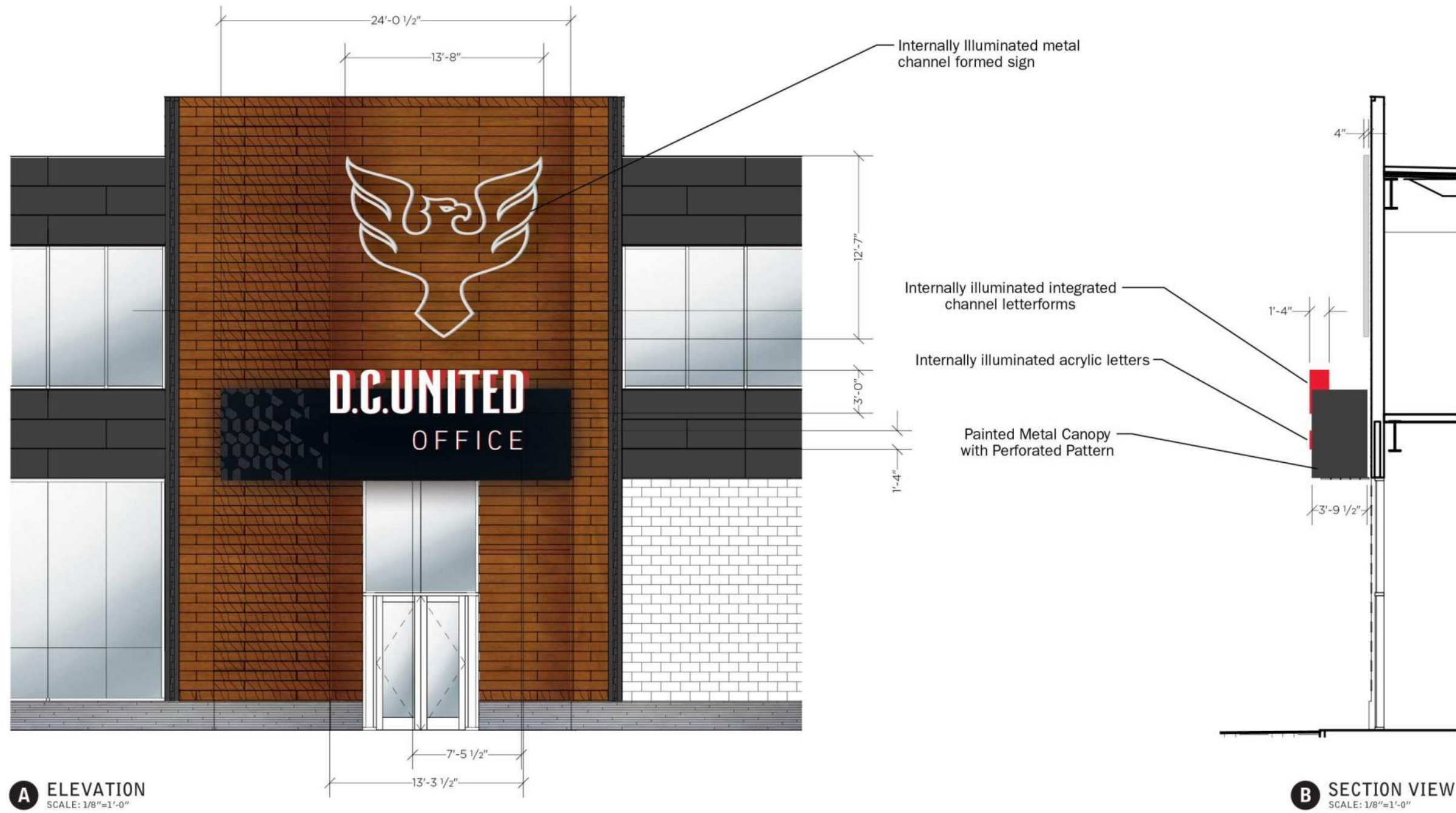
**A** OPTION A  
SCALE: 3/4"=1'-0"

**B** OPTION A SIDE VIEW  
SCALE: 3/4"=1'-0"

**C** OPTION B  
SCALE: 3/4"=1'-0"

**D** OPTION B SIDE VIEW  
SCALE: 3/4"=1'-0"





Internally illuminated and dimensional DCU logos. Painted metal and acrylic.

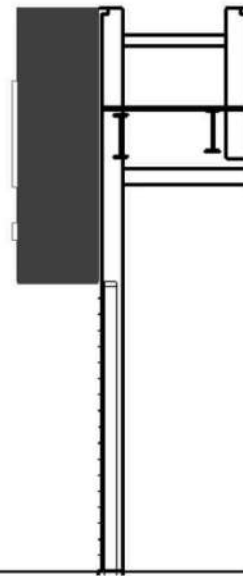


**A** WEST ELEVATION  
SCALE: 1/8"=1'-0"

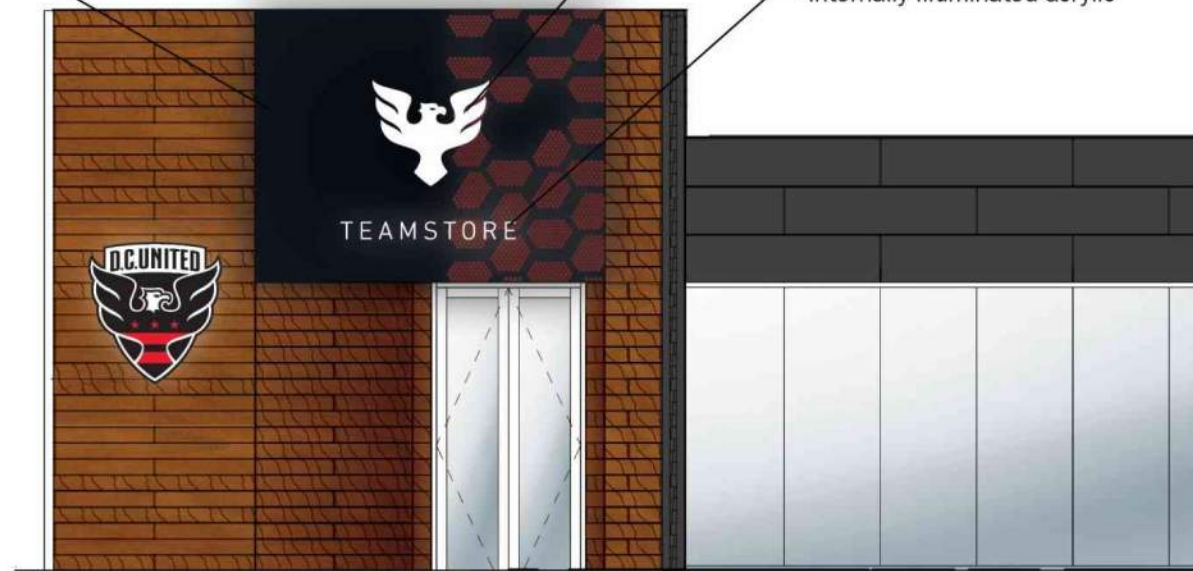
Internally illuminated painted metal cabinet with custom routed face & backed acrylic

Internally illuminated acrylic

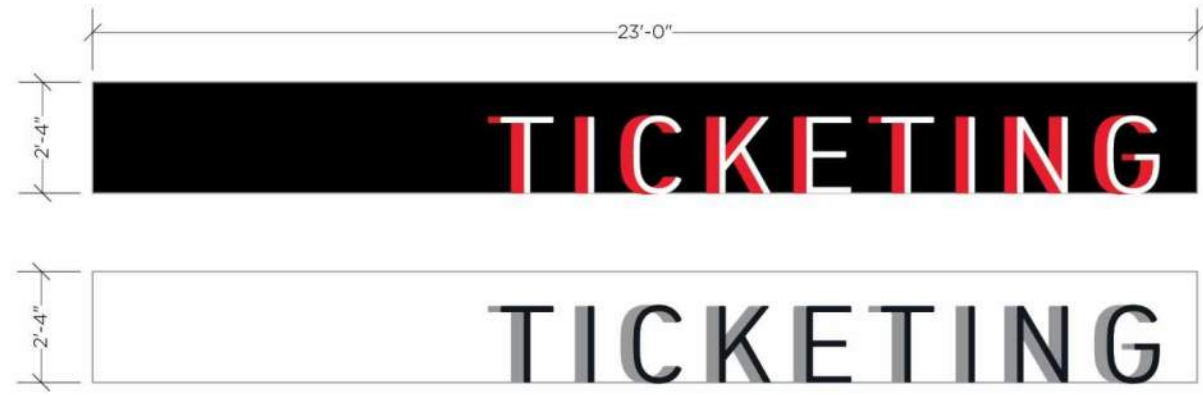
Internally illuminated acrylic



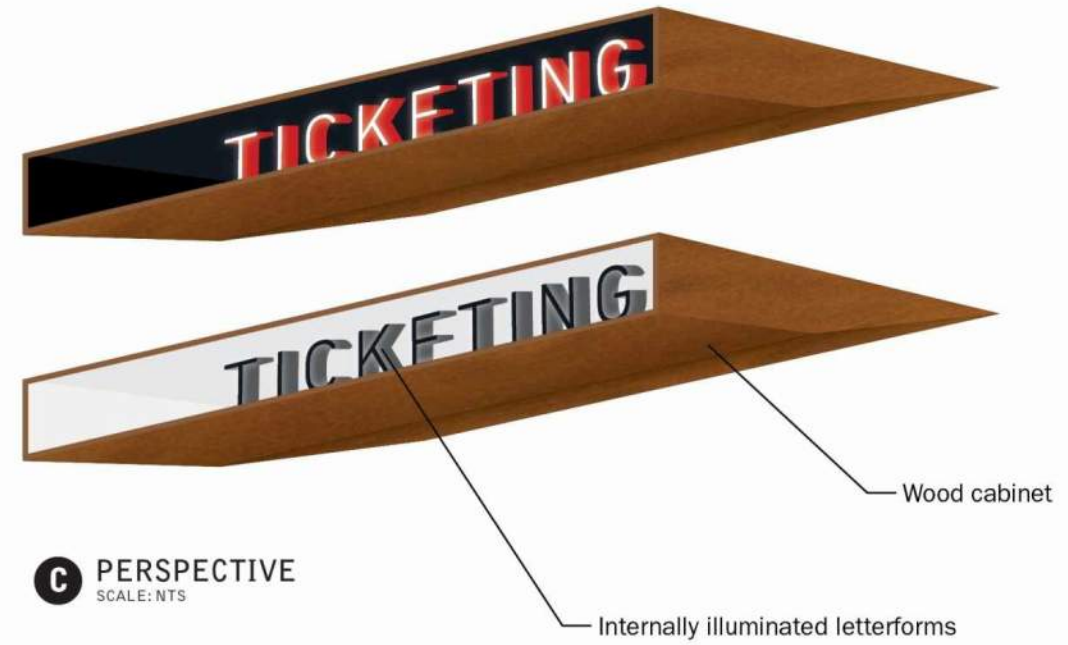
**C** SECTION VIEW  
SCALE: 1/8"=1'-0"



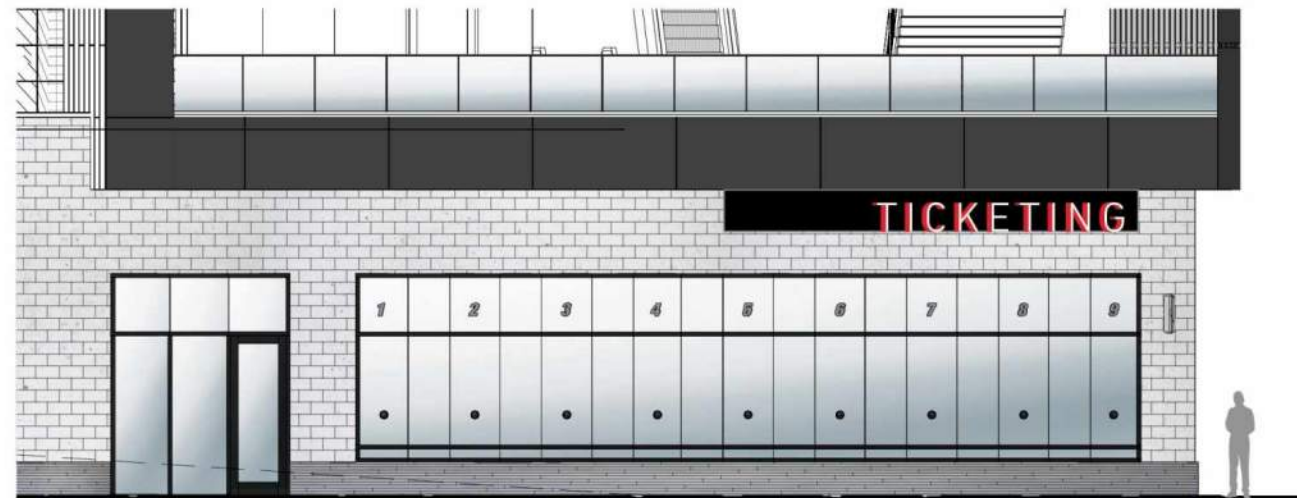
**B** FRONT ELEVATION  
SCALE: 1/8"=1'-0"



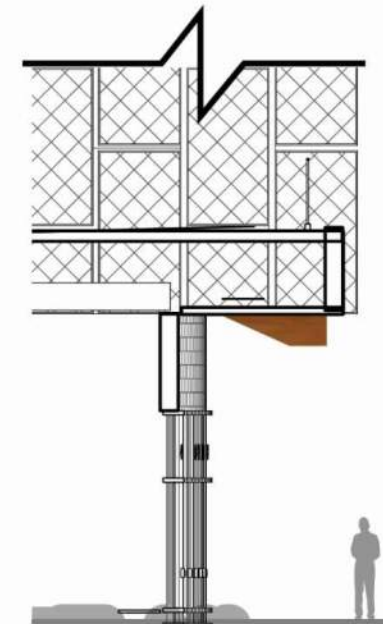
**B** DETAIL  
SCALE: 1/4"=1'-0"



**C** PERSPECTIVE  
SCALE: NTS



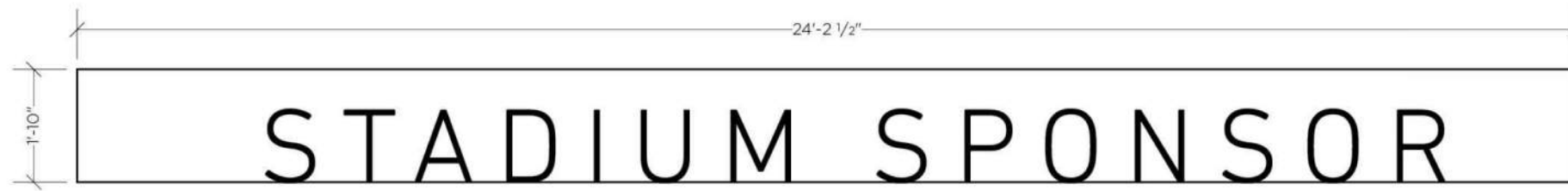
**A** ELEVATION  
SCALE: 3/32"=1'-0"



**D** SECTION VIEW  
SCALE: 3/32"=1'-0"



**F** REFERENCE IMAGES

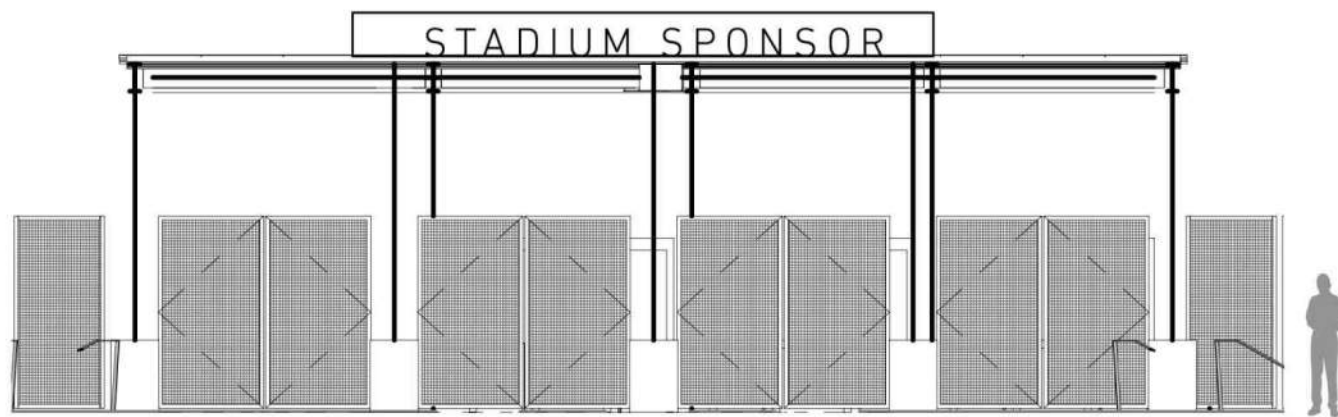


**A** DETAIL  
SCALE: 3/8"=1'-0"

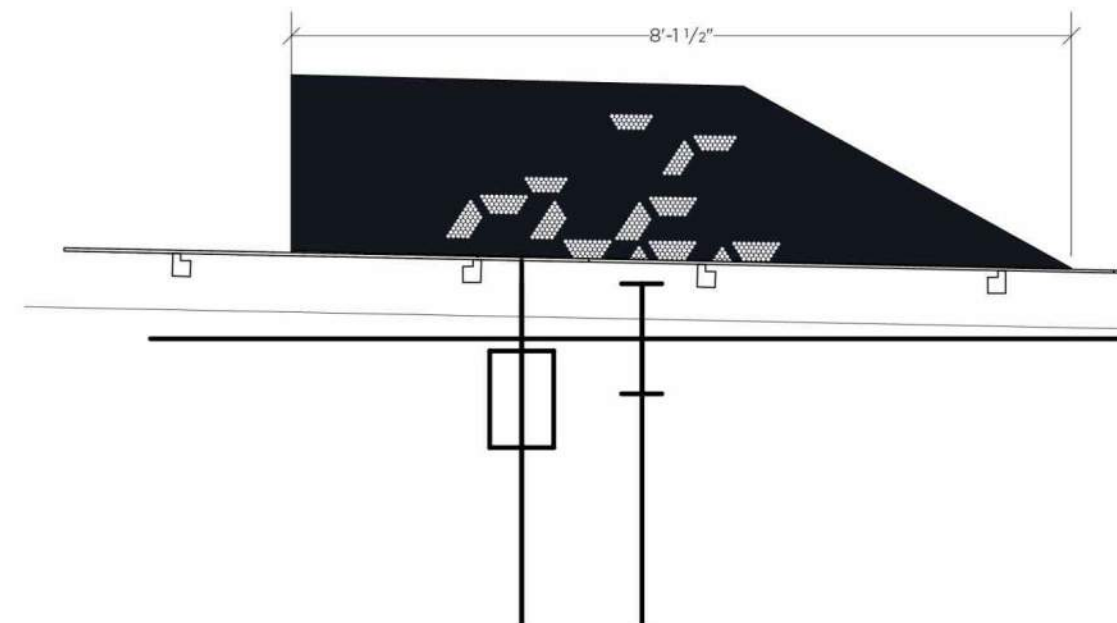


**B** 3D VIEW

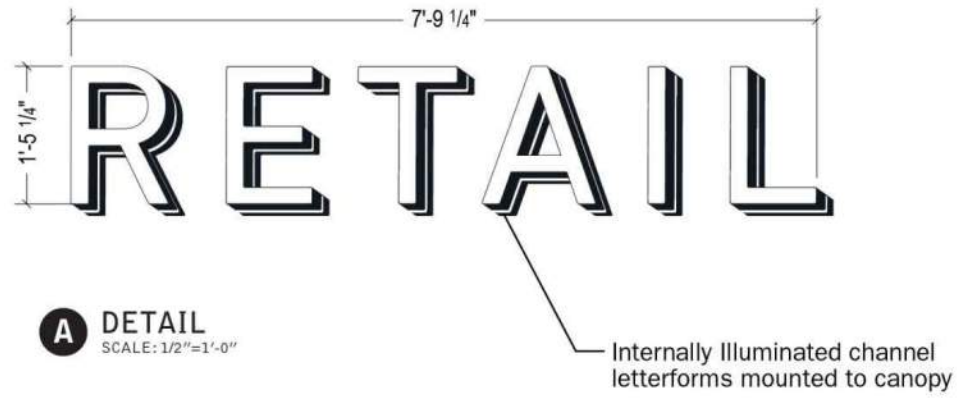
Internally illuminated letterforms



**C** ELEVATION  
SCALE: 1/8"=1'-0"



**D** SIDE VIEW  
SCALE: 1/2"=1'-0"



Internal illuminated white acrylic cabinet blade sign with painted metal mounting support



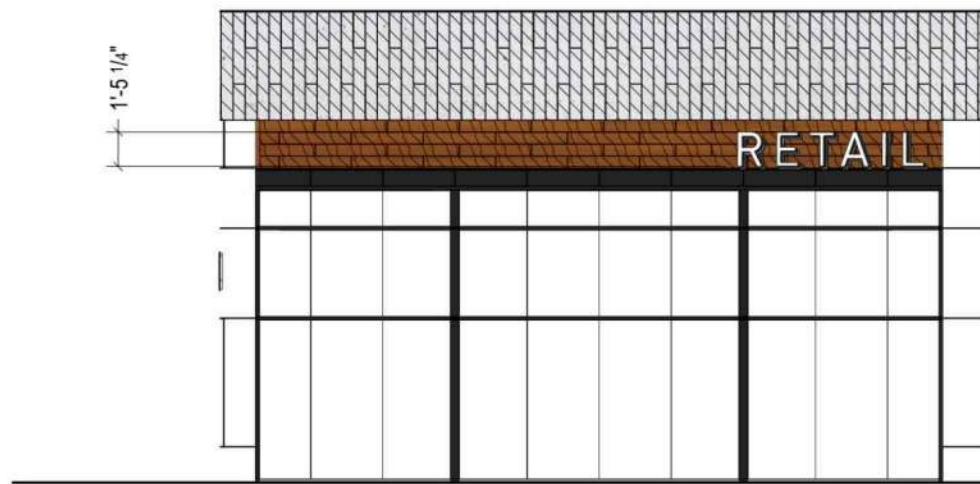
Wood cabinet blade sign with internally illuminated acrylic push-throughs



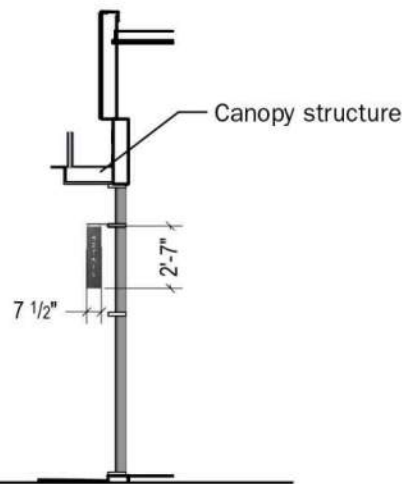
Metal panel blade sign with white dimensional lettering and painted metal mounting support



Metal panel blade sign with white dimensional lettering and stainless steel mounting sleeve



**B** FRONT ELEVATION  
SCALE: 1/8"=1'-0"

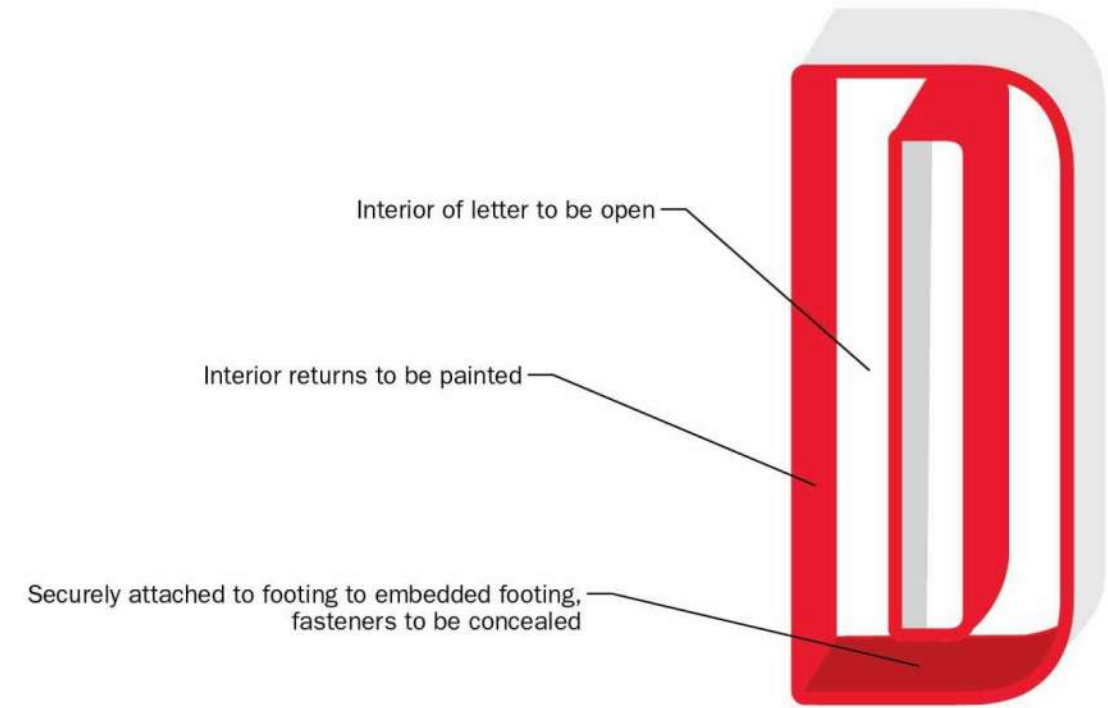


**C** FRONT ELEVATION  
SCALE: 1/8"=1'-0"

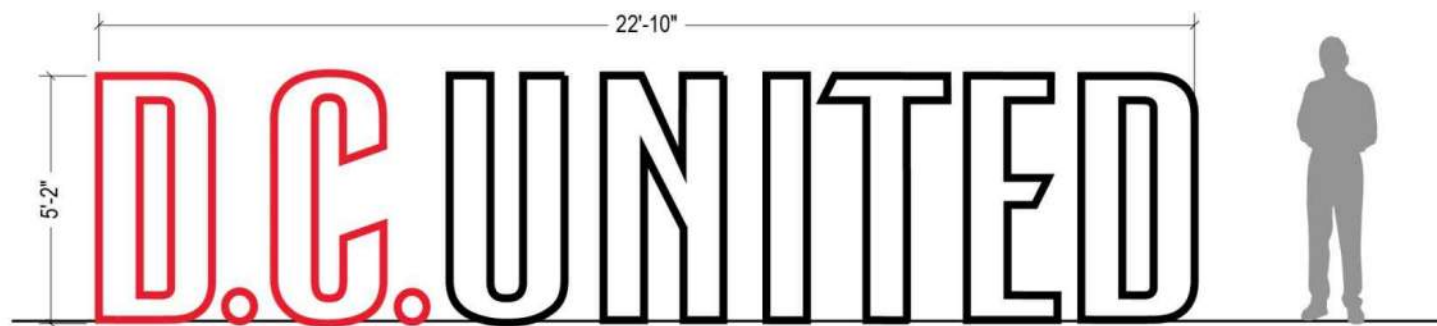
**D** BLADE OPTIONS  
SCALE: 3/4"=1'-0"



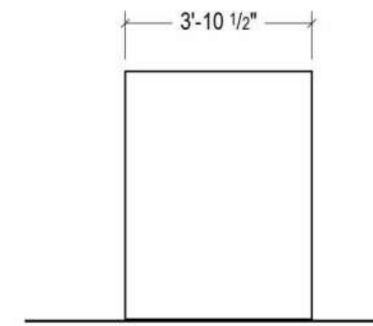
**C** 3D VIEW



**D** DETAIL 3D VIEW



**A** FRONT ELEVATION  
SCALE: 1/4"=1'-0"



**B** SIDE VIEW  
SCALE: 1/4"=1'-0"

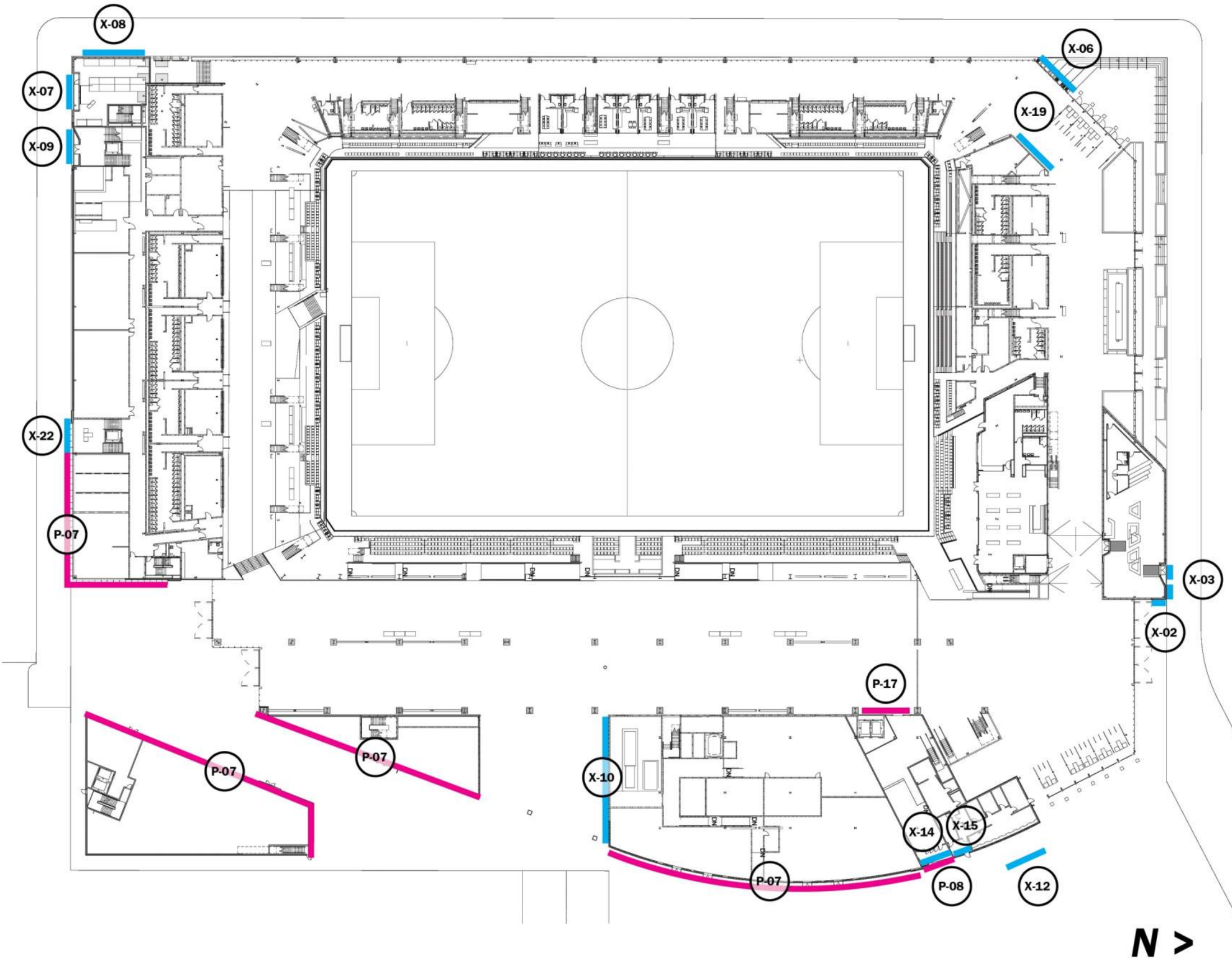
# 100 CONCOURSE LEVEL PLAN

## SIGN TYPE P - SPONSORSHIP SIGNAGE

- P-07** RETAIL SIGNAGE
- P-08** GATE SPONSOR PORTAL - NORTHEAST GATE
- P-17** CLUB SPONSOR ENTRY ID

## SIGN TYPE X - EXTERIOR BRAND GRAPHICS

- X-02** TEAM STORE DCU LOGOS
- X-03** TEAM STORE BRANDING
- X-06** DC UNITED LARGESCALE LETTERS
- X-07** BIKE VALET ID
- X-08** BIKE VALET WINDOW GRAPHICS
- X-10** DC UNITED BRANDING
- X-12** DC UNITED LARGESCALE LETTERS
- X-14** PREMIUM ENTRY ID
- X-15** TICKETING SALES ID
- X-19** DC UNITED LOGO
- X-22** DCU STAFF ENTRY



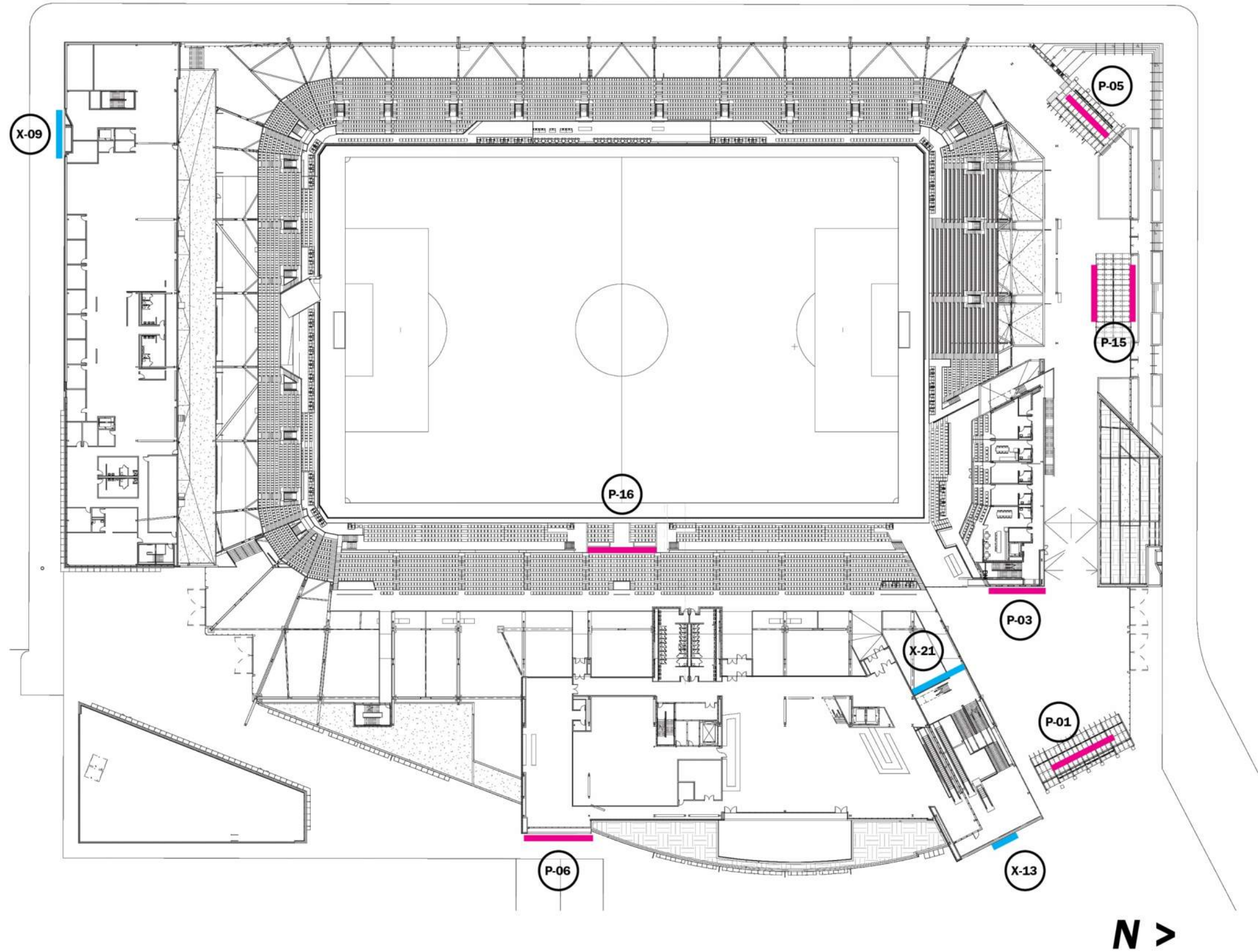
# 200 CLUB LEVEL PLAN

## SIGN TYPE P - SPONSORSHIP SIGNAGE

- P-01** STADIUM SPONSOR ID - NORTHEAST GATE
- P-03** CLUB SPONSOR
- P-05** GATE SPONSOR PORTAL - NORTHWEST GATE
- P-06** GATE SPONSOR PORTAL - S ST. ENTRY GATE
- P-15** BAR SPONSOR ID
- P-16** STADIUM SPONSOR ID - PLAYER SEATS

## SIGN TYPE X - EXTERIOR BRAND GRAPHICS

- X-09** DC UNITED OFFICE ID
- X-13** TICKETING ID
- X-21** DC UNITED LOGO



SPONSOR & BRANDING SIGNAGE LOCATIONS ARE INTERCHANGABLE DEPENDING ON THE SPONSOR PACKAGES



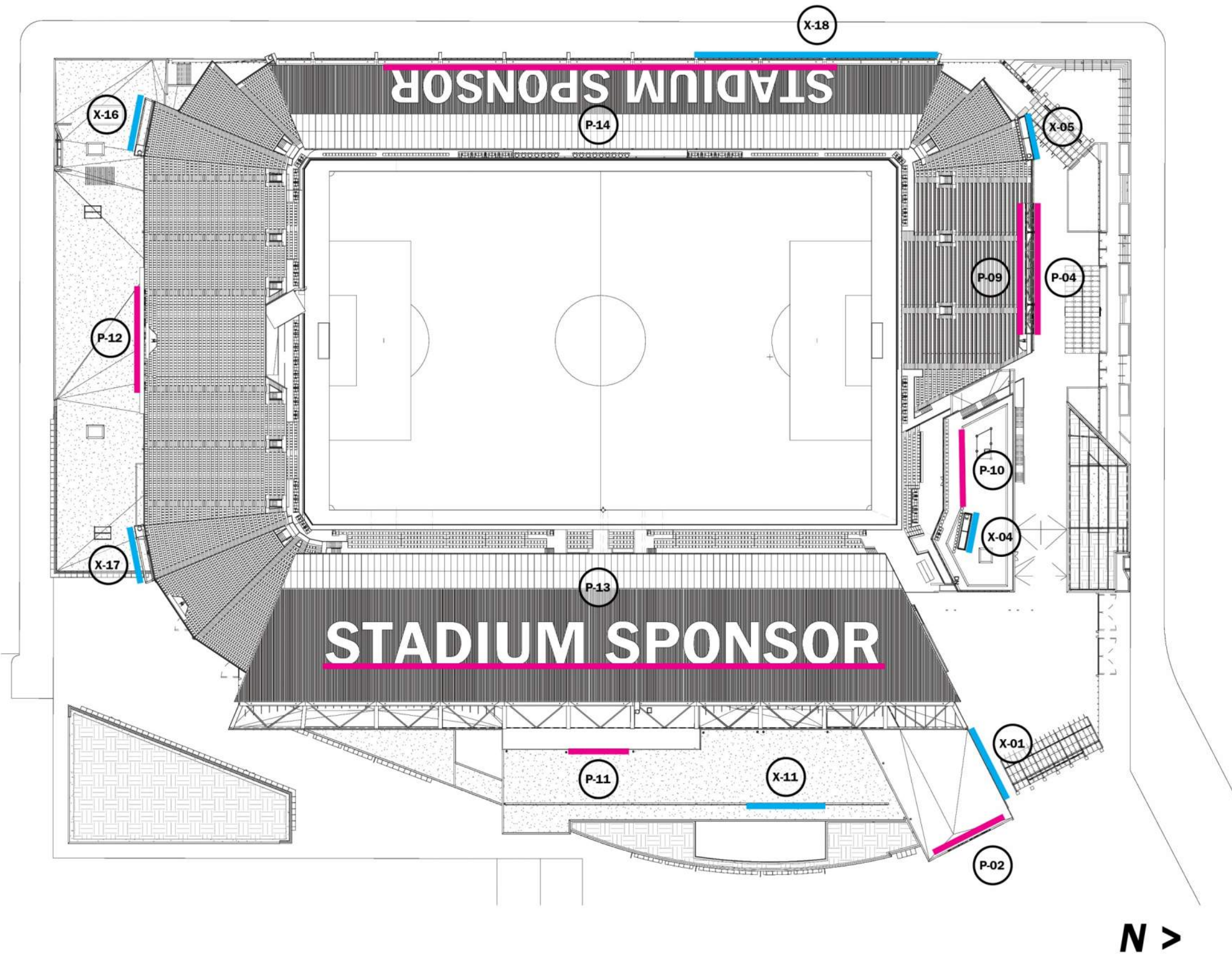
## 500 ROOF LEVEL PLAN

### SIGN TYPE P - SPONSORSHIP SIGNAGE

- P-02** STADIUM SPONSOR ID - TOP OF STAIR TOWER
- P-04** STADIUM ID - SPONSOR / DC UNITED
- P-09** STADIUM SPONSOR ID - NORTH INTERIOR BOWL
- P-10** BAR SPONSOR ID
- P-11** STADIUM SPONSOR ID - SOUTH INTERIOR BOWL
- P-12** STADIUM SPONSOR ID - SOUTH
- P-13** STADIUM SPONSOR ID - EAST ROOF CANOPY
- P-14** STADIUM SPONSOR ID - WEST ROOF CANOPY

### SIGN TYPE X - EXTERIOR BRAND GRAPHICS

- X-01** BANNER GRAPHICS
- X-04** DC UNITED BANNER
- X-05** DC UNITED BANNER
- X-11** DC UNITED BRANDING
- X-16** DC UNITED BANNER
- X-17** DC UNITED BANNER
- X-18** STADIUM DC UNITED ID



## **SPONSORSHIP & EXTERIOR BRAND SIGNAGE INDEX**

### **SIGN TYPE P - SPONSORSHIP SIGNAGE**

- P-01** STADIUM SPONSOR ID - NORTHEAST GATE  
*Internally illuminated letterforms with cabinet.*
- P-02** STADIUM SPONSOR ID - TOP OF STAIR TOWER  
*Internally illuminated metal channel letterforms.*
- P-03** CLUB SPONSOR  
*Internally illuminated metal channel letterforms and logo.*
- P-04** STADIUM ID - SPONSOR / DC UNITED  
*Internally illuminated metal channel letterforms mounted to mesh.*
- P-05** GATE SPONSOR PORTAL - NORTHWEST GATE  
*Aluminum channel letterforms on painted metal panel portal.*
- P-06** GATE SPONSOR PORTAL - S ST. ENTRY GATE  
*Aluminum channel letterforms on painted metal panel portal.*
- P-07** RETAIL SIGNAGE  
*Material varies.*
- P-08** GATE SPONSOR PORTAL - NORTHEAST GATE  
*Metal dimensional letterforms.*
- P-09** STADIUM SPONSOR ID - NORTH INTERIOR BOWL  
*Internally illuminated metal channel letterforms mounted to painted metal cabinet.*
- P-10** BAR SPONSOR ID  
*Internally illuminated metal channel letterforms.*
- P-11** STADIUM SPONSOR ID - SOUTH INTERIOR BOWL  
*Internally illuminated metal channel letterforms mounted to painted metal cabinet.*
- P-12** STADIUM SPONSOR ID - SOUTH  
*Internally illuminated metal channel letterforms mounted to painted metal cabinet.*
- P-13** STADIUM SPONSOR ID - EAST ROOF CANOPY  
*Internally illuminated channel letterforms.*
- P-14** STADIUM SPONSOR ID - WEST ROOF CANOPY  
*Internally illuminated channel letterforms.*
- P-15** BAR SPONSOR ID  
*Internally illuminated metal channel letterforms.*
- P-16** STADIUM SPONSOR ID - PLAYER SEATS  
*Internally illuminated metal channel letterforms mounted to painted metal cabinet.*
- P-17** CLUB SPONSOR ENTRY ID  
*Metal channel letterforms.*
- P-18** CLUB SPONSOR ENTRY ID  
*Metal channel letterforms.*

### **SIGN TYPE X - EXTERIOR BRAND GRAPHICS**

- X-01** BANNER GRAPHICS  
*Printed mesh fabric banner.*
- X-02** TEAM STORE DCU LOGOS  
*Internally illuminated and dimensional DCU logos. Painted metal and acrylic.*
- X-03** TEAM STORE BRANDING  
*Internally illuminated painted metal cabinet with perforated metal cabinet.*
- X-04** DC UNITED BANNER  
*Printed mesh fabric banner.*
- X-05** DC UNITED BANNER  
*Printed mesh fabric banner.*
- X-06** DC UNITED LARGESCALE LETTERS  
*Internally illuminated metal channel letterforms.*
- X-07** BIKE VALET ID  
*Painted channel lettering and logo mounted to a framed wood panel.*
- X-08** BIKE VALET WINDOW GRAPHICS  
*Die-cut vinyl graphics applied to glass.*
- X-09** DC UNITED OFFICE ID  
*Internally illuminated metal channel letterform and perforated metal canopy.*
- X-10** DC UNITED BRANDING  
*Printed vinyl graphics.*
- X-11** DC UNITED BRANDING  
*Printed vinyl graphics with metal channel letters.*
- X-12** DC UNITED LARGESCALE LETTERS  
*Freestanding dimensional metal letterforms.*
- X-13** TICKETING ID  
*Internally illuminated metal channel letterforms.*
- X-14** PREMIUM ENTRY ID  
*Internally illuminated metal channel letterforms.*
- X-15** TICKETING SALES ID  
*Metal dimensional letterforms.*
- X-16** DC UNITED BANNER  
*Printed mesh fabric banner.*
- X-17** DC UNITED BANNER  
*Printed mesh fabric banner.*
- X-18** STADIUM DC UNITED ID  
*Internally illuminated metal channel letterforms.*
- X-19** DC UNITED LOGO  
*Internally illuminated and dimensional DCU logo. Painted metal and acrylic.*
- X-20** DC UNITED LOGO  
*Internally illuminated and dimensional DCU logo. Painted metal and acrylic.*
- X-21** DC UNITED LOGO  
*Internally illuminated and dimensional DCU logo. Painted metal and acrylic.*
- X-22** DCU STAFF ENTRY  
*Metal channel letterforms.*
- X-23** DIRECTIONAL PYLON  
*Internally illuminated directional pylon. Painted metal and acrylic.*